

# SENAB

## Färgmarkeringar och/eller symboler för hållbara alternativ i prislistan:

### Mörkgrön markering eller symbol

Miljömärkt produkt – Möbler där hela den sammansatta varan har en typ 1 miljömärkning enligt ISO 14024 med Svanen, Möbelfakta, EU Ecolabel eller annan likvärdig märkning.

### Ljusgrön markering eller symbol

Hållbarhetsmärkt produkt eller beståndsdel – Möbler där hela eller delar av den sammansatta varan är hållbarhetsmärkt, exempelvis med FSC, EU Ecolabel eller OEKO-TEX®. Leverantören ska kunna ge mer detaljerad information om vilka delar eller variationer som är hållbarhetsmärka vid begäran.

### Orange markering eller symbol

Klimatberäknad produkt – Produkt med dokumenterad miljövarudeklaration (EPD) enligt ISO 14025.

### Lila markering eller symbol

Produkt med återvunnet eller förnybart material (enligt definitionerna i ISO 14021). Leverantören ska kunna ge information om andel (%) återvunnet och/eller förnybart (biobaserat) vid begäran. Märkning av återvinningsbart material utgår.

### Blå markering eller symbol

Demonterbar produkt – Produkt som är demonterbar till olika komponenter och beståndsdelar som i första hand möjliggör återbruk och i andra hand materialåtervinning när produkten nått sin fulla livslängd. Produkten ska vara designad för renovering, det vill säga att det ska vara enkelt att reparera och byta ut moduler, komponenter och beståndsdelar som slits över tid. Exempelvis ska ytskikt, som bordsskivor, textil och stoppning kunna tas isär, avlägsnas och ersättas med hjälp av vanligt förekommande manuella verktyg, ej specialverktyg. Enklare reparationer och utbytesarbeten ska kunna utföras av en lekman. Om det krävs fackmanakunskap för mer avancerade arbeten ska det framgå av anvisningarna som leverantören ska kunna ge vid begäran. Anvisningarna ska innehålla en sprängskiss, steg för steg beskrivning inklusive vilka verktyg som krävs samt hur möbelns ingående delar bör källsorteras.

FRIENDS  
FOUNDERS



**PRICE LIST 2023**

RECOMMENDED RETAIL PRICE EXCL & INCL VAT / SEK

## PRICE LIST

Recommended retail prices excluding & including VAT.  
Prices are excluding installation and transport cost.  
Price list 2023 vol 1 (replaces former price list).

Friends & Founders standard collection is presented  
in the price list. Customizations available upon request.  
Discontinued items are only available if in stock or upon  
special request.

Specified lead times are estimated and vary according  
to demand and availability. Surcharge and prolonged  
lead time may be expected for custom made items.

Reservations are made for any typographical errors.  
Friends & Founders reserves the right to alter prices,  
design, descriptions or terms and conditions at any  
time without prior notice.

All products are crafted in Scandinavia / Europe.  
Explore the collection at

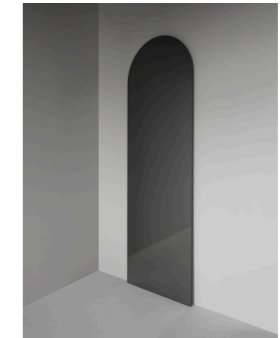
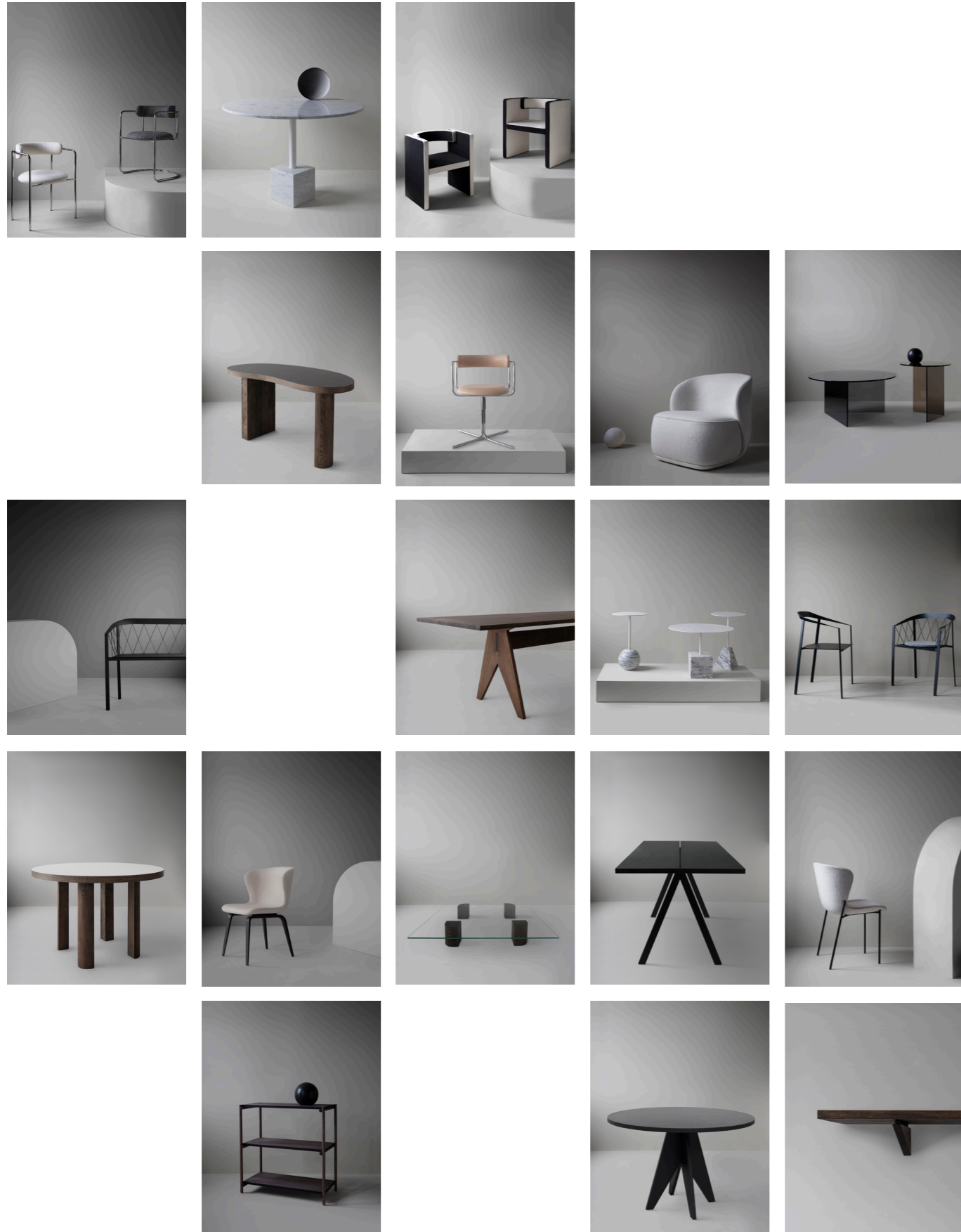
**FRIENDSFOUNDERS.COM**

## CONTACT

ENQUIRIES	<a href="mailto:info@friendsfounders.com">info@friendsfounders.com</a>
ORDERS	<a href="mailto:order@friendsfounders.com">order@friendsfounders.com</a>
CONTACT	+45 33 31 21 71
ARCHIVE	<a href="#">Link to downloads</a>

<b>COLLECTION</b>	1
<b>UPHOLSTERY SELECTION</b>	3
<b>FURNITURE</b>	9
<b>OBJECTS</b>	55
<b>LIGHTING</b>	63
<b>MATERIALS &amp; FINISHES</b>	69
<b>GENERAL SALES CONDITIONS</b>	71

# COLLECTION



## FURNITURE

PIPE WOOD	9
PIPE	11
PIPE LOUNGE	15
NOVEL	17
FF	19
FF SWIVEL	25
MY CHAIR	27
OUR BENCH	29
POSE	31
QUARTER	35
QUARTER LOUNGE	37
MS BEAN	39
KNOCKOUT	41
SAW	45
POND	49
SHELVISH	51
UP TOWN	53

## OBJECTS

CASTLE	55
MIRÓ MIRÓ	57
ARC	59
STAND OUT	61

## LIGHTING

PARIS NIGHTS	63
LA LAMPE	65
BOXER	67

# UPHOLSTERY

## SELECTED COLLECTION

GROUP	COLLECTION	SUPPLIER	CHARACTERISTICS	COMPOSITION	FIRE CERTIFICATES	DURABILITY	CATEGORY
1	RELATE	KVADRAT	TREVIRA CS	100% TREVIRA CS	CAL 117-2013 / BS 5852 CRIB5	80.000	CONTRACT
	EROS	NEVOTEX	VELVET CHENILLE	51% AC / 40% PL / 9% VI	CAL 117-2013 / BS 5852-1	50.000	CONTRACT
2	BARNUM	NEVOTEX	BOUCLÉ	45% CO, 15% WO, 13% AC, 19% VI, 8% Nylon	CAL 117-2013 / BS 5852-1	60.000	CONTRACT
	ATHERINI	DEDAR	CHEVRON	59%PES 41%CO	CAL 117-2013	40.000	RESIDENTIAL
	LOOP	KIRKBY	BOUCLÉ	46% PC 23% WO 15% CO 12% PA 4% PL	CAL 117-2013 / BS 5852-1** / CRIB5**	60.000	CONTRACT
	ADAMO & EVA	DEDAR	VELVET COTTON	100% CO	BS 5852 / CRIB5**	50.000	CONTRACT
	MERIT COM	MAHARAM	RECYCLED POLYESTER	76% Recycled PL, 24% PL Customers Own Material	CAL 117-2013 / BS 5852 CRIB5**	100.000	CONTRACT
3	ZERO	SAHCO	BOUCLÉ	65% CO, 20% VI, 22% PL	EN 1021-1 / BS 5852-1 / ** CRIB5**	70.000	CONTRACT
	NIMBUS	DEDAR	RICH BOUCLÉ	70%WO 15%CO 10%PA 5%PES	CAL 117-2013 / BS 5852 CRIB5**	40.000	RESIDENTIAL
	MOSS	KVADRAT	TEXTURED CHENILLE	52% CO, 22% VI, 14% PA, 3% Nylon, 3% PL, 6% LI	BS 5852-1 / EN 1021-1&2 / CRIB5**	50.000	CONTRACT
	SAVANNA	KVADRAT	BOUCLÉ	34% PL, 31% New wool, 26% AC, 4% CO, 3% PA, 2% LI	CAL 117-2013 / EN 1021-1&2 / CRIB5**	45.000	RESIDENTIAL
	ECRITURE	SAHCO	CHENILLE MELANGE	40% PA, 27%PL,18%VI,9%LI,6%CO	CAL 117-2013 / EN 1021-1&2 / CRIB5**	70.000	CONTRACT
	MARABOU	DEDAR	TREVIRA CS	100% TREVIRA CS	CAL 117-2013 / BS 5852 CRIB5	80.000	CONTRACT
	KARAKORUM	DEDAR	BOUCLÉ	42%WO 33%CV 24%CO 1%PA	CAL 117-2013 / BS 5852 CRIB5**	40.000	RESIDENTIAL
	VIDAR 4 COL	KVADRAT	BOUCLÉ	94% New wool, 6% Nylon Customers Own Leather	CAL 117-2013 / EN 1021-1&2 / CRIB5**	100.000	CONTRACT
	4	A JOY	DEDAR	WOOL TWILL	53%CV 37%WO 8%LI 2%PA	BS 5852 / CRIB5**	40.000
TIGER MOUNTAIN		DEDAR	JACQUARD VELVET	63%CV 37%CO	BS 5852 / CRIB5**	40.000	RESIDENTIAL
TIGER BEAT		DEDAR	JACQUARD VELVET	52%CV 35%CO 13%PES		30.000	RESIDENTIAL
SWAN		DEDAR	JACQUARD	53%WO 47%MERINO	BS 5852	5.000	RESIDENTIAL

## LEATHER COLLECTION

GROUP	COLLECTION	SUPPLIER	CHARACTERISTICS	COMPOSITION	FIRE CERTIFICATES	DURABILITY	CATEGORY
A	DAKAR*	NEVOTEX	ANILINE LEATHER	Smooth leather / wax / PCP FREE	CAL 117-2013 / EN 1021-1&2		LEATHER
B	DUET	SØRENSEN	ANILINE LEATHER	Smooth velvety grain leather	CAL 117-2013 / EN 1021-1&2		LEATHER
	DUNES	SØRENSEN	ANILINE LEATHER	Matt Soft Grain Leather / chrome free	CAL 117-2013 / EN 1021-1&2		LEATHER
	TRIUMPH	SØRENSEN	PROTECTED LEATHER	CRIB 5 - Matt smooth strong incl surface protection	CAL 117-2013 / EN 1021-1&2 / CRIB5		LEATHER
C	ROYAL NUBUCK	SØRENSEN	ANILINE LEATHER	Smooth velvety grain leather / scotch-guard	CAL 117-2013 / EN 1021-1&2		LEATHER

\* NOT SUITABLE FOR LA PIPE LOUNGE

\*\* PASSES WITH ADDITIONAL TREATMENT

Minimum order quantity for leather may occur.

Fire treatment (CRIB 5) upon request. Please visit the suppliers website or FRIENDS & FOUNDERS' ARCHIVE for exploring all colour options and for technical specifications and care & maintenance guidelines. COLOUR DEVIATIONS FROM SAMPLES MAY OCCUR FOR FABRIC AND LEATHER COLOUR CHARTS.

## SELECTED COLLECTION

The standard collection of Fabrics & Leathers are selected and tested by Friends & Founders. This means we assure the quality of the upholstery work and are confident that our products will look good and meet our standards. Learn more about the selection in the UPHOLSTERY appendix.

## PREFERRED SUPPLIERS

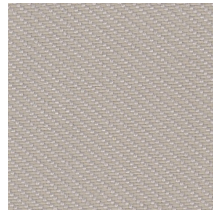
In addition to the standard upholstery collection, we offer other collections from suppliers from which we order and provide pricing upon request. Note that all upholstery must be tested and approved by our quality department before processing the order. Our preferred suppliers are: **KVADRAT / SAHCO / MAHARAM / NOBILIS / NEVOTEX / KIRKBY / DEDAR / SORENSEN LEATHER / CA-MO / GABRIEL**

## COM / COL

Customers own material (COM / COL) need to be tested and approved by Friends & Founders according to testing procedures. Prolonged lead time may be expected (approximately + 2 WEEKS for test and approval). Surcharge / administration fee for handling test samples may occur. Minimum test samples size 30 x 30 cm (smaller samples will be rejected). COM / COL orders may be subject to a minimum order quantity per item.

## FABRIC COLLECTION

### PRICE GROUP 1



#### RELATE

Relate is a sophisticated twill weave upholstery textile designed by Patricia Urquiola made from Trevira CS, which has a soft hand resembling natural fibres. The versatile palette for Relate comprises 35 colour ways and expresses confident colour combinations by combining warm notes with closely related nuances. Relate is suitable for contract and private use.

RESIDENTIAL & CONTRACT USE / 35 COLOURS / [WWW.KVADRAT.COM](http://WWW.KVADRAT.COM)



#### EROS

EROS velvet chenille-like fabric in the lower price range is suitable for contract use and projects with high quantities. It is highly durable and available in a wide range of colours. Eros fabric is characterized by its soft and velvety feel and its slightly crushed surface creates a playful expression.

RESIDENTIAL & CONTRACT USE / 43 COLOURS / [WWW.NEVOTEX.COM](http://WWW.NEVOTEX.COM)

## FABRIC COLLECTION

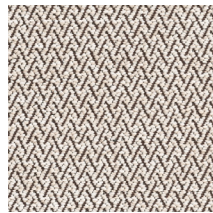
### PRICE GROUP 2



#### BARNUM

BARNUM is a cotton bouclé fabric, with references to the 70s. Comfortable and bulky with a soft hand-feel. Textured and soft to the touch, bouclé fabrics combines strength with a comfortable hand-feel. Irregularity is a vital element of the fabric's preciousness. BARNUM is offered in a palette of 16 beautiful shades.

RESIDENTIAL & CONTRACT USE / 16 COLOURS / [WWW.NEVOTEX.COM](http://WWW.NEVOTEX.COM)



#### ATHERINI

A densely packed chevron motif creates a hard wearing jacquard fabric. The extremely simple graphic stroke, whose impact lies in repetition, evokes the movement of a shoal of silver sides, the tiny fish that skim the surface of the sea floor.

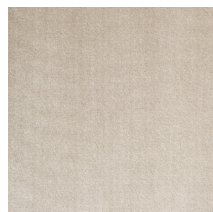
RESIDENTIAL USE / 2 COLOURS / [WWW.DEDAR.COM](http://WWW.DEDAR.COM)



#### LOOP

A staple in Kirkby Design's library of sophisticated plains, Loop, a flattened bouclé weave, is offered in a comprehensive palette of on-trend shades including Petal, Evergreen and Olive, as well as a considered selection of modern neutrals.

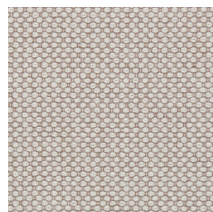
RESIDENTIAL & CONTRACT USE / 25 COLOURS / [WWW.KIRKBYDESIGN.COM](http://WWW.KIRKBYDESIGN.COM)



#### ADAMO & EVA

An exquisite quality of Italian-made cotton velvet that is soft, versatile and hard-wearing. A palette of 69 colours comprising striking, traditional and neutral shades.

RESIDENTIAL & CONTRACT USE / 69 COLOURS / [WWW.DEDAR.COM](http://WWW.DEDAR.COM)



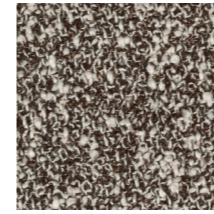
#### MERIT

MERIT is an upholstery textile designed by Maharam Design Studio. Predominantly crafted from recycled material, it offers a rich texture and the pronounced colour depth traditionally associated with wool. Merit has a soft, dimensional surface. Voluminous yarns are held in place by fine mélange yarns. Weathered and solid fibre effects are produced using two different types of dye, which delivers eye-catching colour richness.

RESIDENTIAL & CONTRACT USE / 43 COLOURS / [WWW.MAHARAM.COM](http://WWW.MAHARAM.COM)

## FABRIC COLLECTION

### PRICE GROUP 3



#### ZERO

The influence of Parisian couture clothing can be seen in this elegant and irregular bouclé upholstery textile. The pearl effect yarn is used in both warp and weft giving a luxurious handle and a sophisticated appearance. The sixteen colourways range from tonal through to contrasting 'salt and pepper' combinations.

RESIDENTIAL & CONTRACT USE / 16 COLOURS / [WWW.SAHCO.COM](http://WWW.SAHCO.COM)



#### NIMBUS

A soft wool bouclé fabric reminiscent of puffy clouds. An uneven surface and textural richness are the distinctive features of this fabric. The delicate colour palette, including natural tones and darker shades, enhances the intrinsic nature of wool.

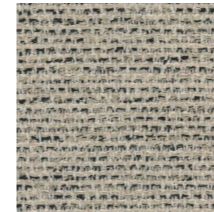
RESIDENTIAL USE / 8 COLOURS / [WWW.DEDAR.COM](http://WWW.DEDAR.COM)



#### MOSS

The second design by Vincent van Duysen and Anna Vilhelmine Ebbesen is the distinctive upholstery fabric Moss. The mixture of twisted yarn and chenille gives the fabric surface a textured structure with an appearance of movement, and also creates a soft handle which adds a special dimension to the furniture it covers. The twenty-two colourways are either one- or two-tone combinations inspired by Vincent van Duysen's own home and range from cool cement and soft blue to oily green, curry yellow and the shades of natural wood.

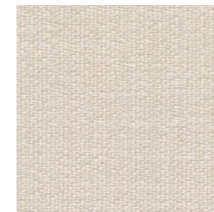
RESIDENTIAL & CONTRACT USE / 22 COLOURS / [WWW.SAHCO.COM](http://WWW.SAHCO.COM)



#### SAVANNA

Savanna combine different types of yarns and materials to offer distinctive depth and richness, created by acclaimed Danish designers, Aggebo & Henriksen. The designers blended yarns with contrasting characters to give the fabric elegant, sophisticated and individual structures: both textiles fuse shiny yarns, matt yarns and bouclé yarns. As a result, they each feature a rich, irregular surface, which reveals an eye-catching play of details when seen from close up.

RESIDENTIAL USE / 12 COLOURS / [WWW.KVADRAT.COM](http://WWW.KVADRAT.COM)



#### ECRITURE

A matt melange bouclé with an elegant sheen, Ecriture upholsters beautifully with an organic rich texture and a cosy comfortable feel. Made with a dobby loom, the fabric combines shiny, matt and chenille yarns to create a surface reminiscent of grains of rice with speckles from the shiny warp yarn. The colours are influenced by ceramic glazes, ranging from powdery rose pink, silver blue and lemon grass to chalky rice, stone grey, oyster grey, ivory and snow white.

RESIDENTIAL & CONTRACT USE / 20 COLOURS / [WWW.KVADRAT.COM](http://WWW.KVADRAT.COM)



#### MARABOU

A chenille evokes the comfort of leisurewear and the full hand of a velvet. Marabou unites the softness of the chenille yarn, used in its warp and weft, with functionality, to make its nonchalant and confident debut in all residential and public interiors. Hardwearing, fire-retardant, washable, and available in a complete range of vibrant colours, it is a precious tool with the addition of the possibility to personalize colour.

RESIDENTIAL & CONTRACT USE / 25 COLOURS / [WWW.DEDAR.COM](http://WWW.DEDAR.COM)



#### KARAKORUM

KARAKORUM is a bouclé wool and viscose fabric, inspired by precious Astrakhan fur. Comfortable and bulky with a soft hand-feel. Textured and soft to the touch, bouclé fabrics combines strength with a comfortable hand-feel. From the natural fibres of wool, the collection enhances the spontaneity typical of craftsmanship, in which irregularity is a vital element of the fabric's preciousness.

RESIDENTIAL USE / 8 COLOURS / [WWW.DEDAR.COM](http://WWW.DEDAR.COM)



#### VIDAR 4

Originally designed by Fanny Aronsen, Vidar has been re-coloured by Raf Simons, with shades ranging from moss green, dark aubergine, ruby red and midnight blue through to brick and earth tones, and easy neutrals. The gentle satin surface finish of the weave contrasts with the deep shadowy tones in the depths, giving a multi-faceted richness to the intense colours in the range. Tightly woven, without the irregularities of the other bouclé fabrics within this collection, Vidar has an inviting texture, which variously recalls blackberries, orange peel or the comforting close-knit texture of a favourite sweater.

RESIDENTIAL & CONTRACT USE / 41 COLOURS / [WWW.KVADRAT.COM](http://WWW.KVADRAT.COM)

## FABRIC COLLECTION

### PRICE GROUP 4



#### A JOY

The twill design of diagonal lines create a unique look and add extra character. A Joy combines a rich linen warp with a bouclé wool weft. Textural and irregular, A JOY is a fabric that enhances the tradition and style of 20th century materials. Comfortable with a soft hand-feel.

RESIDENTIAL USE / 2 COLOURS [WWW.DEDAR.COM](http://WWW.DEDAR.COM)



#### TIGER MOUNTAIN

TIGER MOUNTAIN is high-end. Inspiration drawn from Tibetan carpets which were discovered in the West during the seventies, was used to complete important artistic and design research. A fascinating design as it is open to subjective "imaginative" interpretation, with magical tigers, curious guardians of many mysteries and a map featuring unknown places. A jacquard velvet boasting strong personality, expressive and highly regarded.

RESIDENTIAL USE / 3 COLOURS / [WWW.DEDAR.COM](http://WWW.DEDAR.COM)



#### TIGER BEAT

The coat of a tiger, magnetic and mysterious, comes to life and new colours in this jacquard velvet with a textured Ottoman ground. The curves that agitate the ground and the color combinations pay homage to the more playful and hypnotic side of this majestic creature.

RESIDENTIAL USE / 5 COLOURS / [WWW.DEDAR.COM](http://WWW.DEDAR.COM)



#### SWAN

A moving geometry on an intensely tactile jacquard. This fabric is a very soft virgin merino wool, that evokes the world of men's clothing.

RESIDENTIAL USE / 4 COLOURS / [WWW.DEDAR.COM](http://WWW.DEDAR.COM)

## LEATHER COLLECTION

### PRICE GROUP A



#### DAKAR

DAKAR leather is a classic and elegant smooth Aniline with a silky surface due to the waxed smooth grain. DAKAR looks stunning on design furniture due to its characteristic classic leather look. Besides, it is a durable leather due to the treated strong finish and therefore suitable for contract use as well as residential. DAKAR is produced in ITALY and the full collection ranges 32 traditional and useful colours. From colourful and intense palettes to soft tones in genuine earthy shades.

ANILINE / 32 COLOURS / [WWW.NEVOTEX.COM](http://WWW.NEVOTEX.COM)

## LEATHER COLLECTION

### PRICE GROUP B



#### DUNES

DUNES ANILINE LEATHER characterizes of its natural look, subtleness and sublime tactile feel. A special process involving sanding, buffing and applying a special type of leather oil to the surface gives it that almost velvety touch. At the same time, DUNES boasts a matt look that's raw with a touch of understated elegance. Part of DUNES' extra appeal are the subtle, natural markings which bring a unique personality to each hide. A delicious patina will appear over time. In fact, the more you use DUNES, the more the leather becomes shinier and smoother.

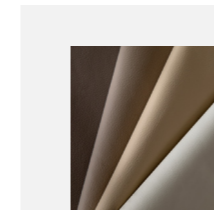
ANILINE / 7 COLOURS / [WWW.SORENSENLEATHER.COM](http://WWW.SORENSENLEATHER.COM)



#### DUET

DUET is a truly cutting-edge concept. A double-sided leather with one side in soft nubuck and the other side in rustic suede. An innovative, eco-collection in a colour palette co-created with Tom Dixon. With both sides to play with, it's your opportunity to experiment with tactility. Create contrast or cohesion – or both. While nubuck is known for its exclusive appeal and velvety-like touch, suede has an understated elegance with slightly more depth. The two surfaces complement each other and correspond well in terms of colour.

ANILINE / 11 COLOURS / [WWW.SORENSENLEATHER.COM](http://WWW.SORENSENLEATHER.COM)



#### TRIUMPH CRIB 5

TRIUMPH collection is exceptionally durable and versatile, characterized by antibacterial properties and aesthetic appeal. Ideal for a wide range of settings, public spaces and industry sectors.

TRIUMPH CRIB5 is as durable as it is beautiful. Fortified by a strong finish that makes the leather smudge and stain resistant, allowing for easy upkeep. It's especially appealing to architects and interior designers for projects where the need for a stunning leather is coupled with a concern for hygiene, as part of the "new norm". From the care sector, institutions, hotels and restaurants to airports, corporate gatherings, private homes and more.

PROTECTED / 37 COLOURS / [WWW.SORENSENLEATHER.COM](http://WWW.SORENSENLEATHER.COM)

## LEATHER COLLECTION

### PRICE GROUP C



#### ROYAL NUBUCK

ROYAL NUBUCK is high-end. It's an exquisite leather with a subtle texture and a velvety-like touch. The silky, smooth surface makes it ideal for items you can reach out and touch. The collection ranges an extensive array of natural colours, which vary depending on the hide. They span a spectrum of rich earthy hues, featuring a subtle gradation of shades from dark to medium to light. All with a discrete natural grain that's unique to each hide.

The luxurious collection ROYAL NUBUCK, with its genuine earthy tones, seduces your senses.

ANILINE / 11 COLOURS / [WWW.SORENSENLEATHER.COM](http://WWW.SORENSENLEATHER.COM)

# PIPE WOOD



## PIPE WOOD

Designed by IDA L. HILDEBRAND

DIMENSIONS in cm	H 81 / W 59 / D 55
SEAT HEIGHT	46
WEIGHT	7 kg
LEAD TIME	6 WEEKS
CONSUMPTION	1.6 m - FABRIC 2.54 sqm - LEATHER

pipe CHAIR / WOODEN BASE	Article no	SEK ex. VAT	SEK incl. VAT
<b>BLACK FRAME</b>			
PRICE GROUP 1	1202-01-1	8796	10995
PRICE GROUP 2	1202-01-2	9996	12495
PRICE GROUP 3	1202-01-3	11196	13995
PRICE GROUP 4	1202-01-4	12396	15495
PRICE GROUP LEATHER A	1202-01-A	12396	15495
PRICE GROUP LEATHER B	1202-01-B	14796	18495
PRICE GROUP LEATHER C	1202-01-C	17196	21495
<b>SMOKED FRAME</b>			
PRICE GROUP 1	1202-04-1	8796	10995
PRICE GROUP 2	1202-04-2	9996	12495
PRICE GROUP 3	1202-04-3	11196	13995
PRICE GROUP 4	1202-04-4	12396	15495
PRICE GROUP LEATHER A	1202-04-A	12396	15495
PRICE GROUP LEATHER B	1202-04-B	14796	18495
PRICE GROUP LEATHER C	1202-04-C	17196	21495

### FINISHES

Fully upholstered armchair featured with wooden base. Frame available in BLACK or SMOKED wood. Upholstery available in a wide range of fabrics and leathers suitable for contract and residential use. UPHOLSTERY PRICE GROUP information on page 3.

*Friends & Founders' wood collection ranges FSC-certified wood, made in Europe*



BLACK ASH

SMOKED WOOD



# PIPE

COLLECTION



## PIPE CHAIR

Designed by IDA L. HILDEBRAND

DIMENSIONS in cm	H 81 / W 59 / D 55
SEAT HEIGHT	46
WEIGHT	7 kg
STACKABLE	1-5 PCS
LEAD TIME	6 WEEKS
CONSUMPTION	1.6 m - FABRIC 2.54 sqm - LEATHER

pipe CHAIR / METAL BASE	Article no	SEK ex. VAT	SEK incl. VAT
-------------------------	------------	-------------	---------------

### BLACK FRAME

PRICE GROUP 1	1201-01-1	8236	10295
PRICE GROUP 2	1201-01-2	9436	11795
PRICE GROUP 3	1201-01-3	10636	13295
PRICE GROUP 4	1201-01-4	11836	14795
PRICE GROUP LEATHER A	1201-01-A	11836	14795
PRICE GROUP LEATHER B	1201-01-B	14236	17795
PRICE GROUP LEATHER C	1201-01-C	16636	20795

### BRASS FRAME

PRICE GROUP 1	1201-02-1	8796	10995
PRICE GROUP 2	1201-02-2	9996	12495
PRICE GROUP 3	1201-02-3	11196	13995
PRICE GROUP 4	1201-02-4	12396	15495
PRICE GROUP LEATHER A	1201-02-A	12396	15495
PRICE GROUP LEATHER B	1201-02-B	14796	18495
PRICE GROUP LEATHER C	1201-02-C	17196	21495

### CHROME FRAME

PRICE GROUP 1	1201-05-1	8796	10995
PRICE GROUP 2	1201-05-2	9996	12495
PRICE GROUP 3	1201-05-3	11196	13995
PRICE GROUP 4	1201-05-4	12396	15495
PRICE GROUP LEATHER A	1201-05-A	12396	15495
PRICE GROUP LEATHER B	1201-05-B	14796	18495
PRICE GROUP LEATHER C	1201-05-C	17196	21495

### OPTIONS

FELT GLIDES SET	C-000130	44	55
-----------------	----------	----	----

### FINISHES

Fully upholstered armchair featured with metal base. Frame in powder coated BLACK or BRASS / CHROME plated steel. Upholstery available in a wide range of fabrics and leathers suitable for contract and residential use. UPHOLSTERY PRICE GROUP information on page 3.



BLACK

BRASS

CHROME



## PIPE COUNTER

Designed by IDA L. HILDEBRAND

DIMENSIONS in cm	H 100 / W 59 / D 55
SEAT HEIGHT	65
FOOT REST HEIGHT	20
WEIGHT	8.5 kg
LEAD TIME	6 WEEKS
CONSUMPTION	1.6 m - FABRIC 2.54 sqm - LEATHER



## PIPE BAR STOOL

Designed by IDA L. HILDEBRAND

DIMENSIONS in cm	H 110 / W 59 / D 55
SEAT HEIGHT	75
FOOT REST HEIGHT	30
WEIGHT	9 kg
LEAD TIME	6 WEEKS
CONSUMPTION	1.6 m - FABRIC 2.54 sqm - LEATHER

### pipe COUNTER CHAIR / METAL BASE

Article no      SEK ex. VAT      SEK incl. VAT

#### BLACK FRAME

PRICE GROUP 1	1221-01-1	9436	11795
PRICE GROUP 2	1221-01-2	10636	13295
PRICE GROUP 3	1221-01-3	11836	14795
PRICE GROUP 4	1221-01-4	13036	16295
PRICE GROUP LEATHER A	1221-01-A	13036	16295
PRICE GROUP LEATHER B	1221-01-B	15436	19295
PRICE GROUP LEATHER C	1221-01-C	17836	22295

#### BRASS FRAME

PRICE GROUP 1	1221-02-1	10636	13295
PRICE GROUP 2	1221-02-2	11836	14795
PRICE GROUP 3	1221-02-3	13036	16295
PRICE GROUP 4	1221-02-4	14236	17795
PRICE GROUP LEATHER A	1221-02-A	14236	17795
PRICE GROUP LEATHER B	1221-02-B	16636	20795
PRICE GROUP LEATHER C	1221-02-C	19036	23795

#### CHROME FRAME

PRICE GROUP 1	1221-05-1	10636	13295
PRICE GROUP 2	1221-05-2	11836	14795
PRICE GROUP 3	1221-05-3	13036	16295
PRICE GROUP 4	1221-05-4	14236	17795
PRICE GROUP LEATHER A	1221-05-A	14236	17795
PRICE GROUP LEATHER B	1221-05-B	16636	20795
PRICE GROUP LEATHER C	1221-05-C	19036	23795

#### OPTIONS

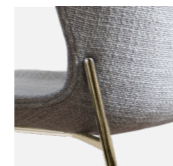
FELT GLIDES SET	C-000130	44	55
-----------------	----------	----	----

#### FINISHES

Fully upholstered armchair featured with metal base. Frame in powder coated BLACK or BRASS / CHROME plated steel. Upholstery available in a wide range of fabrics and leathers suitable for contract and residential use. UPHOLSTERY PRICE GROUP information on page 3.



BLACK



BRASS



CHROME

### pipe BAR CHAIR / METAL BASE

Article no      SEK ex. VAT      SEK incl. VAT

#### BLACK FRAME

PRICE GROUP 1	1222-01-1	9436	11795
PRICE GROUP 2	1222-01-2	10636	13295
PRICE GROUP 3	1222-01-3	11836	14795
PRICE GROUP 4	1222-01-4	13036	16295
PRICE GROUP LEATHER A	1222-01-A	13036	16295
PRICE GROUP LEATHER B	1222-01-B	15436	19295
PRICE GROUP LEATHER C	1222-01-C	17836	22295

#### BRASS FRAME

PRICE GROUP 1	1222-02-1	10636	13295
PRICE GROUP 2	1222-02-2	11836	14795
PRICE GROUP 3	1222-02-3	13036	16295
PRICE GROUP 4	1222-02-4	14236	17795
PRICE GROUP LEATHER A	1222-02-A	14236	17795
PRICE GROUP LEATHER B	1222-02-B	16636	20795
PRICE GROUP LEATHER C	1222-02-C	19036	23795

#### CHROME FRAME

PRICE GROUP 1	1222-05-1	10636	13295
PRICE GROUP 2	1222-05-2	11836	14795
PRICE GROUP 3	1222-05-3	13036	16295
PRICE GROUP 4	1222-05-4	14236	17795
PRICE GROUP LEATHER A	1222-05-A	14236	17795
PRICE GROUP LEATHER B	1222-05-B	16636	20795
PRICE GROUP LEATHER C	1222-05-C	19036	23795

#### OPTIONS

FELT GLIDES SET	C-000130	44	55
-----------------	----------	----	----

#### FINISHES

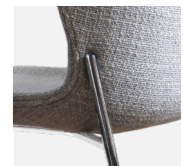
Fully upholstered armchair featured with metal base. Frame in powder coated BLACK or BRASS / CHROME plated steel. Upholstery available in a wide range of fabrics and leathers suitable for contract and residential use. UPHOLSTERY PRICE GROUP information on page 3.



BLACK



BRASS



CHROME

# PIPE LOUNGE



## PIPE LOUNGE

Designed by IDA L. HILDEBRAND



DIMENSIONS in cm	H 77.5 / W 83.5 / D 78
SEAT HEIGHT	41 (42.5 swivel)
WEIGHT	38.5 kg (42.5 incl. swivel)
LEAD TIME	6 WEEKS
CONSUMPTION	4 m - FABRIC 8.5 sqm - LEATHER

pipe LOUNGE / FIXED BASE	Article no	SEK ex. VAT	SEK incl. VAT
PRICE GROUP 1	1251-1	23596	29495
PRICE GROUP 2	1251-2	25996	32495
PRICE GROUP 3	1251-3	28396	35495
PRICE GROUP 4	1251-4	30796	38495
PRICE GROUP LEATHER A	1251-A	33996	42495
PRICE GROUP LEATHER B	1251-B	41996	52495
PRICE GROUP LEATHER C	1251-C	49996	62495

pipe LOUNGE / RETURN SWIVEL	Article no	SEK ex. VAT	SEK incl. VAT
PRICE GROUP 1	1255-1	26396	32995
PRICE GROUP 2	1255-2	28796	35995
PRICE GROUP 3	1255-3	31196	38995
PRICE GROUP 4	1255-4	33596	41995
PRICE GROUP LEATHER A	1255-A	36796	45995
PRICE GROUP LEATHER B	1255-B	44796	55995
PRICE GROUP LEATHER C	1255-C	52796	65995

### OPTIONS

WOODEN EXPORT CRATE	P-900103	796	995
---------------------	----------	-----	-----

### UPHOLSTERY

PIPE LOUNGE chair, featured in full upholstery. Available with fixed base or return swivel. Upholstery available in a wide range of fabrics and leathers suitable for contract and residential use. UPHOLSTERY PRICE GROUP information on page 3.

# NOVEL

CHAIR



## NOVEL

Designed by IDA L. HILDEBRAND

DIMENSIONS in cm	H 73 / W 65 / D 59
SEAT HEIGHT	44
WEIGHT	13.5 kg
LEAD TIME	6 WEEKS
CONSUMPTION	2.5 m - FABRIC 4.2 sqm - LEATHER

novel CHAIR / FRIENDS & FOUNDERS' SELECTED	Article no	SEK ex. VAT	SEK incl. VAT
NOVEL S1 / WHITE CHAIR & BLACK EDGE	1301-S1	21196	26495
NOVEL S2 / BLACK CHAIR & WHITE EDGE	1301-S2	21196	26495

novel CHAIR	Article no	SEK ex. VAT	SEK incl. VAT
PRICE GROUP 1	1301-1	15916	19895
PRICE GROUP 2	1301-2	18316	22895
PRICE GROUP 3	1301-3	20716	25895
PRICE GROUP 4	1301-4	23196	28995
PRICE GROUP LEATHER A	1301-A	23196	28995
PRICE GROUP LEATHER B	1301-B	28236	35295
PRICE GROUP LEATHER C	1301-C	33276	41595

### UPHOLSTERY

NOVEL chair, featured in full upholstery. Available in optional one colour or in Friends & Founders' SELECTED 2-coloured design. Upholstery available in a wide range of fabrics and leathers suitable for contract and residential use. UPHOLSTERY PRICE GROUP information on page 3.



1-COLOURED



2-COLOURED / S1



2-COLOURED / S2

# FF CHAIR

COLLECTION





## FF CHAIR

Designed by IDA L. HILDEBRAND

DIMENSIONS in cm	H 75 / W 55 / D 55
SEAT HEIGHT	46
ARMREST HEIGHT	70
WEIGHT	8.8 kg
LEAD TIME	6 WEEKS
CONSUMPTION	1.0 m - FABRIC 1.5 sqm - LEATHER



## FF CHAIR CUBIC

Designed by IDA L. HILDEBRAND

DIMENSIONS in cm	H 75 / W 55 / D 55
SEAT HEIGHT	46
ARMREST HEIGHT	70
WEIGHT	8.8 kg
LEAD TIME	6 WEEKS
CONSUMPTION	1.0 m - FABRIC 1.5 sqm - LEATHER

### ff CHAIR / 4 -LEGS / ROUNDED UPHOLSTERY

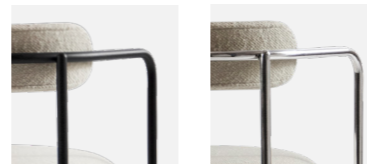
	Article no	SEK ex. VAT	SEK incl. VAT
<b>BLACK FRAME</b>			
PRICE GROUP 1	1355-01-1	7036	8795
PRICE GROUP 2	1355-01-2	7996	9995
PRICE GROUP 3	1355-01-3	8956	11195
PRICE GROUP 4	1355-01-4	9916	12395
PRICE GROUP LEATHER A	1355-01-A	9916	12395
PRICE GROUP LEATHER B	1355-01-B	11516	14395
PRICE GROUP LEATHER C	1355-01-C	13116	16395
<b>CHROME FRAME</b>			
PRICE GROUP 1	1355-05-1	7396	9245
PRICE GROUP 2	1355-05-2	8356	10445
PRICE GROUP 3	1355-05-3	9316	11645
PRICE GROUP 4	1355-05-4	10276	12845
PRICE GROUP LEATHER A	1355-05-A	10276	12845
PRICE GROUP LEATHER B	1355-05-B	11876	14845
PRICE GROUP LEATHER C	1355-05-C	13476	16845

### ff CHAIR / 4 -LEGS / CUBIC UPHOLSTERY

	Article no	SEK ex. VAT	SEK incl. VAT
<b>BLACK FRAME</b>			
PRICE GROUP 1	1351-01-1	7876	9845
PRICE GROUP 2	1351-01-2	8836	11045
PRICE GROUP 3	1351-01-3	9796	12245
PRICE GROUP 4	1351-01-4	10756	13445
PRICE GROUP LEATHER A	1351-01-A	10756	13445
PRICE GROUP LEATHER B	1351-01-B	12356	15445
PRICE GROUP LEATHER C	1351-01-C	13996	17495
<b>CHROME FRAME</b>			
PRICE GROUP 1	1351-05-1	8236	10295
PRICE GROUP 2	1351-05-2	9196	11495
PRICE GROUP 3	1351-05-3	10156	12695
PRICE GROUP 4	1351-05-4	11116	13895
PRICE GROUP LEATHER A	1351-05-A	11116	13895
PRICE GROUP LEATHER B	1351-05-B	12716	15895
PRICE GROUP LEATHER C	1351-05-C	14316	17895

### FINISHES

Armchair featured with upholstered seat and back. Frame in powder coated BLACK or CHROME plated steel. Upholstery available in a wide range of fabrics and leathers suitable for contract and residential use. UPHOLSTERY PRICE GROUP information on page 3.



BLACK

CHROME

### FINISHES

Armchair featured with upholstered seat and back. Frame in powder coated BLACK or CHROME plated steel. Upholstery available in a wide range of fabrics and leathers suitable for contract and residential use. UPHOLSTERY PRICE GROUP information on page 3.



BLACK

CHROME



## FF CANTILEVER

Designed by IDA L. HILDEBRAND

DIMENSIONS in cm	H 75 / W 55 / D 56.5
SEAT HEIGHT	46
ARMREST HEIGHT	70
WEIGHT	9.3 kg
LEAD TIME	6 WEEKS
CONSUMPTION	1.0 m - FABRIC 1.5 sqm - LEATHER



## FF CANTILEVER CUBIC

Designed by IDA L. HILDEBRAND

DIMENSIONS in cm	H 75 / W 55 / D 56.5
SEAT HEIGHT	46
ARMREST HEIGHT	70
WEIGHT	9.3 kg
LEAD TIME	6 WEEKS
CONSUMPTION	1.0 m - FABRIC 1.5 sqm - LEATHER

### ff CHAIR / CANTILEVER / ROUNDED UPHOLSTERY

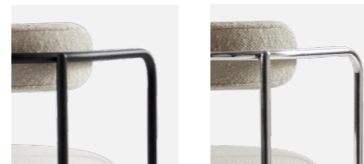
	Article no	SEK ex. VAT	SEK incl. VAT
<b>BLACK FRAME</b>			
PRICE GROUP 1	1375-01-1	7876	9845
PRICE GROUP 2	1375-01-2	8836	11045
PRICE GROUP 3	1375-01-3	9796	12245
PRICE GROUP 4	1375-01-4	10756	13445
PRICE GROUP LEATHER A	1375-01-A	10756	13445
PRICE GROUP LEATHER B	1375-01-B	12356	15445
PRICE GROUP LEATHER C	1375-01-C	13996	17495
<b>CHROME FRAME</b>			
PRICE GROUP 1	1375-05-1	8236	10295
PRICE GROUP 2	1375-05-2	9196	11495
PRICE GROUP 3	1375-05-3	10156	12695
PRICE GROUP 4	1375-05-4	11116	13895
PRICE GROUP LEATHER A	1375-05-A	11116	13895
PRICE GROUP LEATHER B	1375-05-B	12716	15895
PRICE GROUP LEATHER C	1375-05-C	14316	17895

### ff CHAIR / CANTILEVER / CUBIC UPHOLSTERY

	Article no	SEK ex. VAT	SEK incl. VAT
<b>BLACK FRAME</b>			
PRICE GROUP 1	1371-01-1	8700	10875
PRICE GROUP 2	1371-01-2	9660	12075
PRICE GROUP 3	1371-01-3	10620	13275
PRICE GROUP 4	1371-01-4	11580	14475
PRICE GROUP LEATHER A	1371-01-A	11580	14475
PRICE GROUP LEATHER B	1371-01-B	13180	16475
PRICE GROUP LEATHER C	1371-01-C	14780	18475
<b>CHROME FRAME</b>			
PRICE GROUP 1	1371-05-1	9036	11295
PRICE GROUP 2	1371-05-2	9996	12495
PRICE GROUP 3	1371-05-3	10956	13695
PRICE GROUP 4	1371-05-4	11916	14895
PRICE GROUP LEATHER A	1371-05-A	11916	14895
PRICE GROUP LEATHER B	1371-05-B	13516	16895
PRICE GROUP LEATHER C	1371-05-C	15116	18895

### FINISHES

Armchair featured with upholstered seat and back. Cantilever frame in powder coated BLACK or CHROME plated steel. Upholstery available in a wide range of fabrics and leathers suitable for contract and residential use. UPHOLSTERY PRICE GROUP information on page 3.



BLACK

CHROME

### FINISHES

Armchair featured with upholstered seat and back. Cantilever frame in powder coated BLACK or CHROME plated steel. Upholstery available in a wide range of fabrics and leathers suitable for contract and residential use. UPHOLSTERY PRICE GROUP information on page 3.



BLACK

CHROME

# FF SWIVEL



## FF SWIVEL

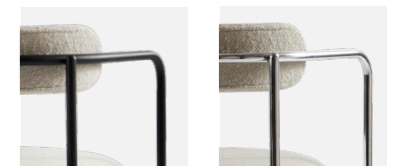
Designed by IDA L. HILDEBRAND

DIMENSIONS in cm	H 75 / W 55 / D 55
SEAT HEIGHT	46
ARMREST HEIGHT	70
WEIGHT	8.8 kg
LEAD TIME	6 WEEKS
CONSUMPTION	1.0 m - FABRIC 1.5 sqm - LEATHER

ff CHAIR / SWIVEL / ROUNDED UPHOLSTERY	Article no	SEK ex. VAT	SEK incl. VAT
<b>BLACK FRAME</b>			
PRICE GROUP 1	1385-01-1	11180	13975
PRICE GROUP 2	1385-01-2	12140	15175
PRICE GROUP 3	1385-01-3	13100	16375
PRICE GROUP 4	1385-01-4	14060	17575
PRICE GROUP LEATHER A	1385-01-A	14060	17575
PRICE GROUP LEATHER B	1385-01-B	15660	19575
PRICE GROUP LEATHER C	1385-01-C	17260	21575
<b>CHROME FRAME</b>			
PRICE GROUP 1	1385-05-1	11756	14695
PRICE GROUP 2	1385-05-2	12716	15895
PRICE GROUP 3	1385-05-3	13676	17095
PRICE GROUP 4	1385-05-4	14636	18295
PRICE GROUP LEATHER A	1385-05-A	14636	18295
PRICE GROUP LEATHER B	1385-05-B	16236	20295
PRICE GROUP LEATHER C	1385-05-C	17836	22095

### FINISHES

Armchair featured with upholstered seat and back. Frame in powder coated BLACK or CHROME plated steel. Upholstery available in a wide range of fabrics and leathers suitable for contract and residential use. UPHOLSTERY PRICE GROUP information on page 3.



BLACK

CHROME



# MY CHAIR

COLLECTION



## MY CHAIR

Designed by IDA L. HILDEBRAND

DIMENSIONS in cm	H 81 / W 58.5 / D 50
SEAT HEIGHT	46
ARMREST HEIGHT	67
WEIGHT	11 kg
LEAD TIME	6-8 WEEKS
USE	INDOOR & OUTDOOR

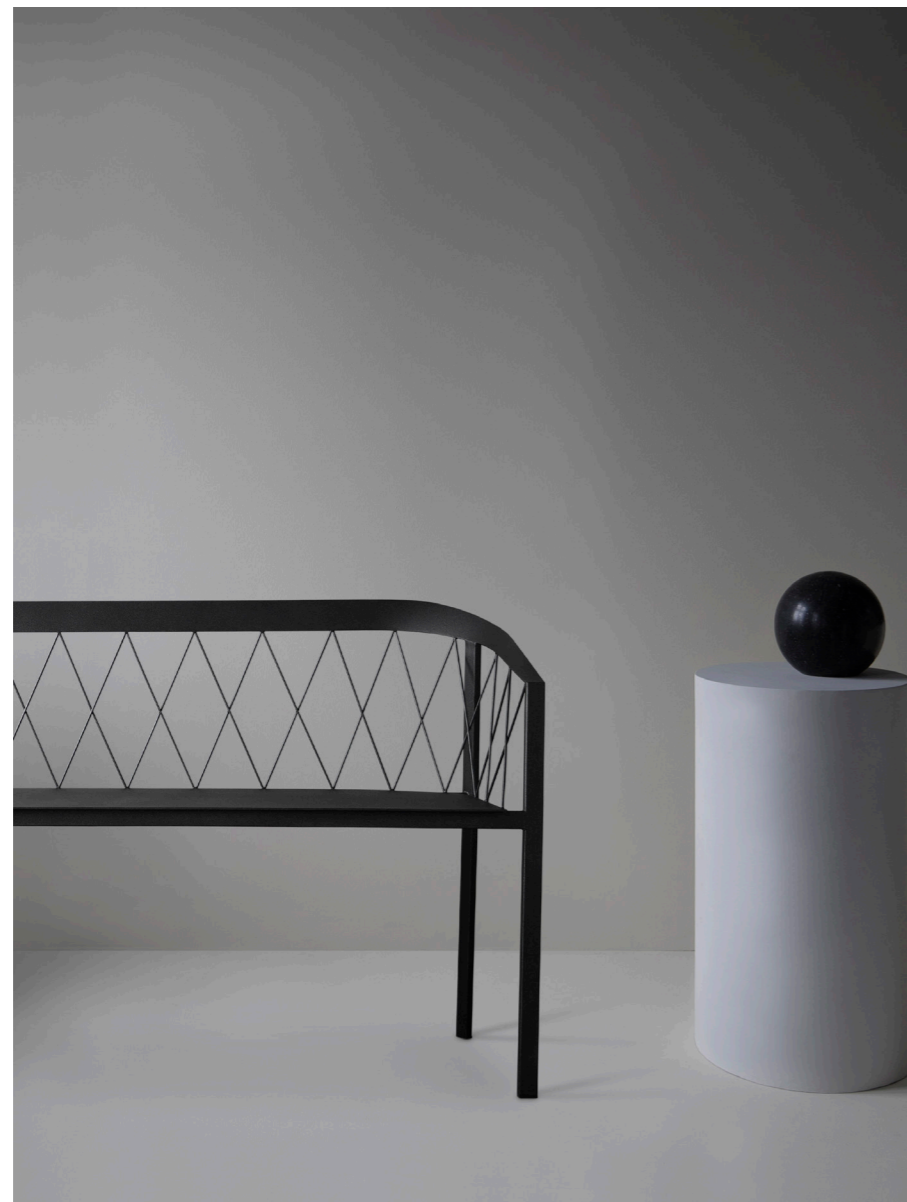
my chair ARMCHAIR / OPEN BACK / OUTDOOR	Article no	SEK ex. VAT	SEK incl. VAT
BLACK	1001-01	5400	6750

my chair ARMCHAIR / NET BACK / OUTDOOR	Article no	SEK ex. VAT	SEK incl. VAT
BLACK	1002-01	9400	11750

### FINISHES

Armchair in powder coated steel. Featured with open back or string net backrest. Finish in a super durable / UV resistance outdoor coating for sunny environments.

# OUR BENCH



## OUR BENCH

Designed by IDA L. HILDEBRAND



DIMENSIONS in cm	H 81 / W 133.5 / D 50
SEAT HEIGHT	46
ARMREST HEIGHT	67
WEIGHT	23 kg
LEAD TIME	6-8 WEEKS
USE	INDOOR & OUTDOOR

### our bench SOFA 2 1/2 SEATER / NET BACK / OUTDOOR

	Article no	SEK ex. VAT	SEK incl. VAT
BLACK	1022-01	14700	18375

### FINISHES

Sofa in powder coated steel. Featured with string net backrest.  
Finish in a super durable / UV resistance outdoor coating for sunny environments.

# POSE



## POSE

Designed by IDA L. HILDEBRAND

### DIMENSIONS in cm

200 x 90	FRAME L 150
250 x 95	FRAME L 150
300 x 100	FRAME L 200
HEIGHT	H 75
TOP THICKNESS	3
LEAD TIME	4-6 WEEKS

pose DINING TABLE / SOLID WOOD / RECTANGULAR		Article no	SEK ex. VAT	SEK incl. VAT
BLACK OAK	200 x 90	2101-11	36800	46000
BLACK OAK	250 x 95	2102-11	41600	52000
BLACK OAK	300 x 100	2103-11	48000	60000
NATURAL OAK	200 x 90	2101-05	36800	46000
NATURAL OAK	250 x 95	2102-05	41600	52000
NATURAL OAK	300 x 100	2103-05	48000	60000
SMOKED OAK	200 x 90	2101-06	36800	46000
SMOKED OAK	250 x 95	2102-06	41600	52000
SMOKED OAK	300 x 100	2103-06	48000	60000

pose BENCH / SOLID WOOD / RECTANGULAR		Article no	SEK ex. VAT	SEK incl. VAT
BLACK OAK	180 x 40	1111-11	20800	26000
NATURAL OAK	180 x 40	1111-05	20800	26000
SMOKED OAK	180 x 40	1111-06	20800	26000

pose DINING TABLE / THERMO WOOD / RECTANGULAR / OUTDOOR		Article no	SEK ex. VAT	SEK incl. VAT
THERMO ASH	200 x 90	2161-12	36000	45000
THERMO ASH	250 x 95	2162-12	48000	51000
THERMO ASH	300 x 100	2163-12	47200	59000

pose BENCH / THERMO WOOD / RECTANGULAR / OUTDOOR		Article no	SEK ex. VAT	SEK incl. VAT
THERMO ASH	180 x 40	1151-12	19600	24500

### FINISHES

Table & bench featured in solid wood with a rectangular design. Available in solid oak with an oiltreated solvent-free satin finish.

Laminate tops and customized sizes available on request.

*Friends & Founders' wood collection ranges FSC-certified wood, made in Europe*



BLACK

NATURAL

SMOKED

# POSE



## POSE

Designed by IDA L. HILDEBRAND

### DIMENSIONS in cm

	DIA 100
	DIA 120
	DIA 140
HEIGHT	H 75
TOP THICKNESS	3
LEAD TIME	4-6 WEEKS

### pose DINING TABLE / SOLID WOOD / ROUND

		Article no	SEK ex. VAT	SEK incl. VAT
BLACK OAK	DIA 100	2121-11	26800	33500
BLACK OAK	DIA 120	2122-11	31600	39500
BLACK OAK	DIA 140	2123-11	36800	46000
BLACK OAK	DIA 160	2124-11	51600	64500
NATURAL OAK	DIA 100	2121-05	26800	33500
NATURAL OAK	DIA 120	2122-05	31600	39500
NATURAL OAK	DIA 140	2123-05	36800	46000
NATURAL OAK	DIA 160	2124-05	51600	64500
SMOKED OAK	DIA 100	2121-06	26800	33500
SMOKED OAK	DIA 120	2122-06	31600	39500
SMOKED OAK	DIA 140	2123-06	36800	46000
SMOKED OAK	DIA 160	2124-06	51600	64500

### pose DINING TABLE / THERMO WOOD / ROUND / OUTDOOR

		Article no	SEK ex. VAT	SEK incl. VAT
THERMO ASH	DIA 90	2171-12	24400	30500
THERMO ASH	DIA 100	2172-12	26000	32500
THERMO ASH	DIA 120	2173-12	30800	38500

### FINISHES

Table featured in solid wood with a round top. Available in solid oak with an oiltreated solvent-free satin finish.

Laminate tops and customized sizes available on request.

*Friends & Founders' wood collection ranges FSC-certified wood, made in Europe*



BLACK



NATURAL



SMOKED

# QUARTER



## QUARTER

Designed by IDA L. HILDEBRAND

DIMENSIONS in cm	
DIA	120
HEIGHT	H 75
TOP THICKNESS	5
LEAD TIME	4-6 WEEKS

### quarter DINING TABLE / SOLID WOOD / ROUND

Article no	SEK ex. VAT	SEK incl. VAT
------------	-------------	---------------

#### VENEER TOP

NATURAL OAK	DIA 120
SMOKED OAK	DIA 120



2131-05	30000	37500
2131-06	30000	37500

#### FENIX LAMINATE TOP / WHITE

NATURAL OAK	DIA 120
SMOKED OAK	DIA 120



2132-07	33200	41500
2132-09	33200	41500

#### FENIX LAMINATE TOP / BLACK

NATURAL OAK	DIA 120
SMOKED OAK	DIA 120



2132-08	33200	41500
2132-10	33200	41500

#### FINISHES

Table featured in wood with a round top in optional veneer or FENIX laminate with wooden edge. Base available in solid oak with an oiltreated solvent-free satin finish.

FENIX has a characteristic super matte silky smooth surface finish with self-repairing and anti-fingerprint technology.

*Friends & Founders' wood collection ranges FSC-certified wood, made in Europe*



NATURAL      NATURAL / WHITE      NATURAL / BLACK



SMOKED      SMOKED / WHITE      SMOKED / BLACK

# QUARTER

TABLE



## QUARTER LOUNGE

Designed by IDA L. HILDEBRAND

DIMENSIONS in cm

	120 x 120
	120 x 70
	DIA 120
HEIGHT	H 21 / H 36
TOP THICKNESS	1
LEAD TIME	4-6 WEEKS

quarter LOUNGE TABLE / SOLID WOOD / LOW	Article no	SEK ex. VAT	SEK incl. VAT
---	------------	-------------	---------------

### SQUARE LOW

NATURAL OAK	120 x 120 / H 21	2151-05	15740	19675
SMOKED OAK	120 x 120 / H 21	2151-06	15740	19675

### ROUND LOW

NATURAL OAK	DIA 120 / H 21	2152-05	16440	20550
SMOKED OAK	DIA 120 / H 21	2152-06	16440	20550

### RECTANGULAR LOW

NATURAL OAK	120 x 70 / H 21	2153-05	15196	18995
SMOKED OAK	120 x 70 / H 21	2153-06	15196	18995

quarter LOUNGE TABLE / SOLID WOOD / HIGH	Article no	SEK ex. VAT	SEK incl. VAT
--	------------	-------------	---------------

### SQUARE HIGH

NATURAL OAK	120 x 120 / H 36	2181-05	19200	24000
SMOKED OAK	120 x 120 / H 36	2181-06	19200	24000

### ROUND HIGH

NATURAL OAK	DIA 120 / H 36	2182-05	20000	25000
SMOKED OAK	DIA 120 / H 36	2182-06	20000	25000

### RECTANGULAR HIGH

NATURAL OAK	120 x 70 / H 36	2183-05	18800	23500
SMOKED OAK	120 x 70 / H 36	2183-06	18800	23500

### FINISHES

Lounge table featured in solid wood and hardened glass. Top in clear glass, available in different designs and heights. Base in solid oak with an oiltreated solvent-free satin finish.

*Friends & Founders' wood collection ranges FSC-certified wood, made in Europe*



NATURAL



SMOKED

# MS BEAN



## MS BEAN

Designed by IDA L. HILDEBRAND

DIMENSIONS in cm	L 150 / D 70
HEIGHT	H 75
TOP THICKNESS	5
LEAD TIME	4-6 WEEKS

### ms bean DESK TABLE / SOLID WOOD

Article no      SEK ex. VAT      SEK incl. VAT

#### VENEER TOP

NATURAL OAK  
SMOKED OAK



2141-05  
2141-06

27720  
27720

34650  
34650

#### FENIX LAMINATE TOP / WHITE

NATURAL OAK  
SMOKED OAK



2142-07  
2142-09

28600  
28600

35750  
35750

#### FENIX LAMINATE TOP / BLACK

NATURAL OAK  
SMOKED OAK



2142-08  
2142-10

28600  
28600

35750  
35750

#### FINISHES

Table featured in wood with a "bean shaped" top in optional veneer or FENIX laminate with wooden edge. Base available in solid oak with an oiltreated solvent-free satin finish.

FENIX has a characteristic super matte silky smooth surface finish with self-repairing and anti-fingerprint technology.

*Friends & Founders' wood collection ranges FSC-certified wood, made in Europe*



NATURAL      NATURAL / WHITE      NATURAL / BLACK



SMOKED      SMOKED / WHITE      SMOKED / BLACK

# KNOCKOUT



# KNOCKOUT

Designed by IDA L. HILDEBRAND

DIMENSIONS in cm	
SQUARE HIGH	H 55 / DIA 60 / 30 kg
SQUARE LOW	H 45 / DIA 60 / 30 kg
PYRAMID	H 55 / DIA 35 / 10 kg
ROUND	H 55 / DIA 35 / 17 kg
HIGH TABLE	H 95 / DIA 60 / 37 kg
LEAD TIME	STOCK (6-8 WEEKS)
USE	INDOOR & OUTDOOR

<b>knock out LOUNGE TABLE / INDOOR &amp; OUTDOOR</b>	Article no	SEK ex. VAT	SEK incl. VAT
--	------------	-------------	---------------

### SQUARE / HIGH

WHITE MARBLE	DIA 60 / H 55
BLACK MARBLE	DIA 60 / H 55
GREEN MARBLE	DIA 60 / H 55
TRAVERTINE	DIA 60 / H 55



2041-01	8520	10650
2041-02	8520	10650
2041-03	10556	13195
2041-04	8120	10150

### SQUARE / LOW

WHITE MARBLE	DIA 60 / H 45
BLACK MARBLE	DIA 60 / H 45
GREEN MARBLE	DIA 60 / H 45
TRAVERTINE	DIA 60 / H 45



2042-01	8520	10650
2042-02	8520	10650
2042-03	10556	13195
2042-04	8120	10150

### PYRAMID

WHITE MARBLE	DIA 35 / H 55
BLACK MARBLE	DIA 35 / H 55
GREEN MARBLE	DIA 35 / H 55
TRAVERTINE	DIA 35 / H 55



2043-01	8228	10285
2043-02	7876	9845
2043-03	15028	18785
2043-04	7408	9260

### ROUND

WHITE MARBLE	DIA 35 / H 55
BLACK MARBLE	DIA 35 / H 55
GREEN MARBLE	DIA 35 / H 55
TRAVERTINE	DIA 35 / H 55



2044-01	8640	10800
2044-02	8840	11050
2044-03	14868	18585
2044-04	7836	9795

<b>knock out HIGH TABLE / INDOOR &amp; OUTDOOR</b>	Article no	SEK ex. VAT	SEK incl. VAT
--	------------	-------------	---------------

### ROUND

BLACK MARBLE	DIA 60 / H 95
--------------	---------------

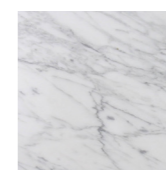


2064-02	11996	14995
---------	-------	-------

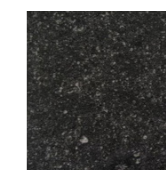
### FINISHES

Table collection featured in different geometric designs. Marble base in selected Swedish or European marble, honed satin finish. Top in powder coated solid aluminium, suitable for outdoor use. Finish in a super durable / UV resistance outdoor coating for sunny environments.

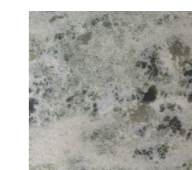
METAL COLOURS
BLACK / RAL 9005
WHITE / RAL 9010



CARRARA  
WHITE STEM & TOP



BELGIUM BLUE  
BLACK STEM & TOP



KOLMÅRDEN  
BLACK STEM & TOP



TRAVERTINE  
BLACK STEM & TOP



# KNOCKOUT

DINING



## KNOCKOUT DINING

Designed by IDA L. HILDEBRAND



DIMENSIONS in cm	H 75 / DIA 110
TOP THICKNESS	2
WEIGHT	97 kg
LEAD TIME	6-8 WEEKS

knock out DINING TABLE / Ø110 cm		Article no	SEK ex. VAT	SEK incl. VAT
<b>WHITE MARBLE</b>				
WHITE STEM	DIA 110 / H 75	2072-01-01	27488	34360
CHROME STEM	DIA 110 / H 75	2072-05-01	29524	36905
<b>BLACK MARBLE</b>				
BLACK STEM	DIA 110 / H 75	2072-02-02	26584	33230
CHROME STEM	DIA 110 / H 75	2072-05-02	28348	35435

*Reservations are made for product sales material imagery that deviates from the sold item. The appearance of natural stone changes from batch to batch due to the natural characteristics of the raw material.*

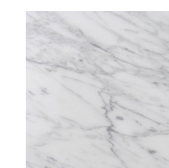
*Fragile and heavy materials as marble, requires special handling and attention. Transport and installation shall only be handled by professionals in order to avoid damages or injuries.*

### FINISHES

Table collection featured in marble with a square geometric base design. Top and base in selected European marble with a honed satin finish. Metal stem available in chrome or in a super durable powder coating.

#### COLOURS

BLACK / RAL 9005  
 WHITE / RAL 9010  
 CHROME



CARRARA



MARQUINA

# SAW

COLLECTION



## SAW WOOD

Designed by IDA L. HILDEBRAND

### DIMENSIONS in cm

200 x 80	FRAME L 130 / 42.5 kg
250 x 95	FRAME L 130 / 58.5 kg
HEIGHT	H 75
TOP THICKNESS	3
LEAD TIME	6-8 WEEKS



saw DINING TABLE / SOLID WOOD / 2 PARTS		Article no	SEK ex. VAT	SEK incl. VAT
BLACK ASH	200 x 80	2012-01	29436	36795
BLACK ASH	250 x 95	2022-01	35200	44000
SMOKED	200 x 80	2012-04	29436	36795
SMOKED	250 x 95	2022-04	35200	44000

saw DINING TABLE / THERMO WOOD / 2 PARTS / OUTDOOR		Article no	SEK ex. VAT	SEK incl. VAT
THERMO ASH	200 x 80	2012-12	29436	36795
THERMO ASH	250 x 95	2022-12	35200	44000

### FINISHES

Table featured in wood with a rectangular top, designed in two parts. Available in solid ash with an oiltreated solvent-free satin finish. Metal frame in a super durable, fine textured powder coating. TESTED AND APPROVED ACCORDING TO THE HIGHEST EUROPEAN STANDARDS FOR STRENGTH / DURABILITY AND STABILITY (EN15372:2008)

*Friends & Founders' wood collection ranges FSC-certified wood, made in Europe*

FRAME COLOUR  
BLACK / RAL 9005



BLACK



SMOKED

**SAW**  
COLLECTION



**SAW MARBLE**

Designed by IDA L. HILDEBRAND



DIMENSIONS in cm

230 x 90	FRAME L 130 / 103.5 kg
HEIGHT	H 75
TOP THICKNESS	2
LEAD TIME	8-10 WEEKS

SAW DINING TABLE / MARBLE / ROUNDED	Article no	SEK ex. VAT	SEK incl. VAT
WHITE MARBLE 230 x 90	2013-02	35200	44000

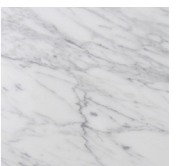
*Reservations are made for product sales material imagery that deviates from the sold item. The appearance of natural stone changes from batch to batch due to the natural characteristics of the raw material.*

*Fragile and heavy materials as marble, requires special handling and attention. Transport and installation shall only be handled by professionals in order to avoid damages or injuries.*

**FINISHES**

Table featured in marble with a characteristic rounded design. Available in selected solid European marble with a honed satin finish. Metal frame in a super durable, fine textured powder coating.

FRAME COLOUR  
BLACK / RAL 9005



CARRARA

# POND

TABLE



# POND

Designed by IDA L. HILDEBRAND

DIMENSIONS in cm

SMALL H 45 / DIA 45 / 11 kg  
 LARGE H 35 / DIA 75 / 20.5 kg  
 LEAD TIME STOCK (6 WEEKS)

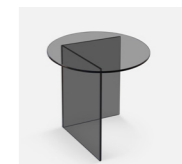
pond LOUNGE TABLE		Article no	SEK ex. VAT	SEK incl. VAT
<b>SMALL</b>				
CLEAR	DIA 45 / H 45	2090-02	12396	15495
GREY SMOKE	DIA 45 / H 45	2090-03	12396	15495
BRONZE	DIA 45 / H 45	2090-04	12396	15495
<b>LARGE</b>				
CLEAR	DIA 75 / H 35	2091-02	14956	18695
GREY SMOKE	DIA 75 / H 35	2091-03	14956	18695
BRONZE	DIA 75 / H 35	2091-04	14956	18695

## FINISHES

Table featured in hardened glass, high gloss finish.  
 UV glued / seamless joints. Available in translucent colours.



CLEAR

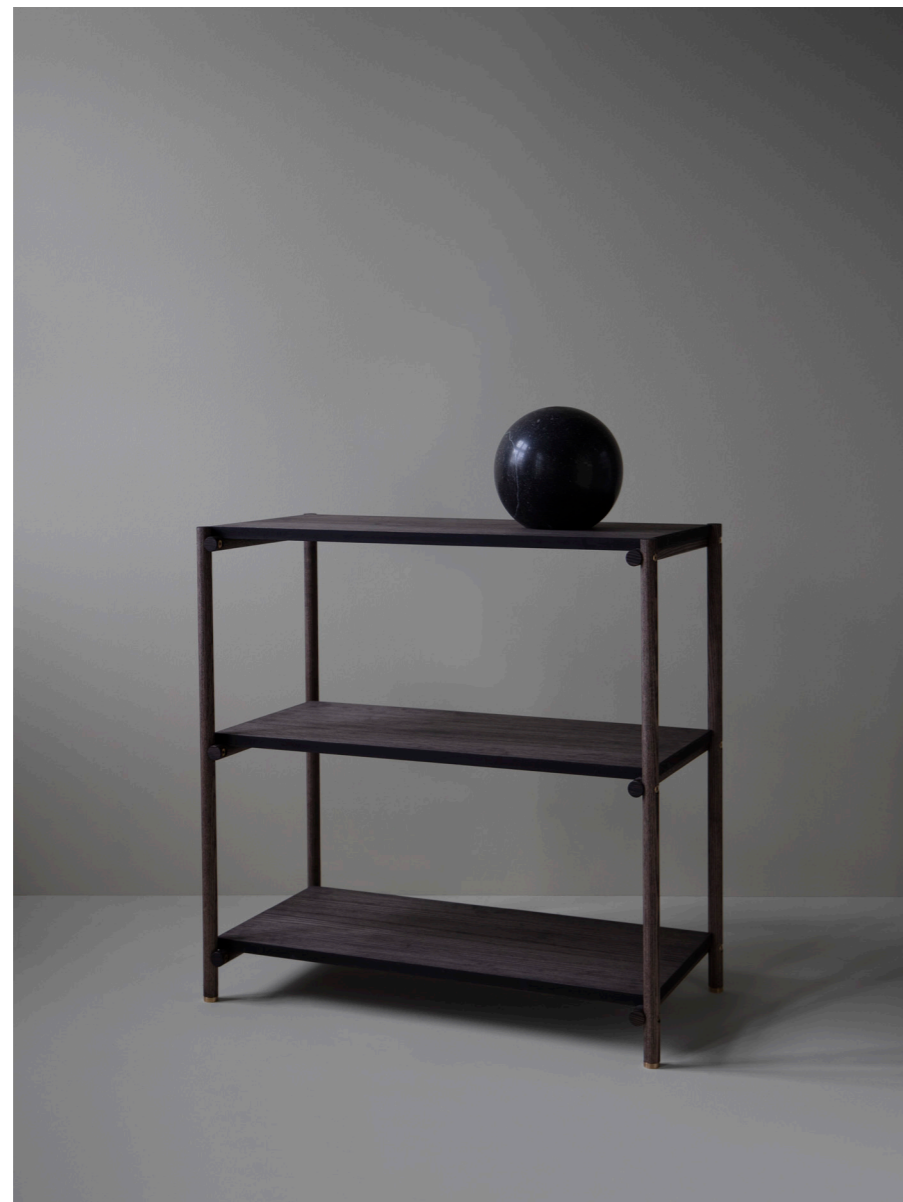


GREY SMOKE



BRONZE





# SHELVISH



## SHELVISH

Designed by IDA L. HILDEBRAND

DIMENSIONS in cm		
SMALL	80 x 80	15 kg
MEDIUM	115 x 80	20 kg
HIGH	150 x 80	25 kg
CONNECTED	80 x 160	28 kg
DEPTH	40	
SHELF DISTANCE	33	
LEAD TIME	6 WEEKS	

shelvish STORAGE / SOLID WOOD		Article no	SEK ex. VAT	SEK incl. VAT
<b>SMALL / 3 SHELVES</b>				
SMOKED	80 x 80	 3003-04	9400	11750
<b>MEDIUM / 4 SHELVES</b>				
SMOKED	115 x 80	 3004-04	11720	14650
<b>HIGH / 5 SHELVES</b>				
SMOKED	150 x 80	 3005-04	14080	17600
<b>CONNECTED / 6 SHELVES</b>				
SMOKED	80 x 160	 3013-04	18800	23500

### FINISHES

Shelf featured in solid wood. Oiltreated solvent-free satin finish. Incl brass details. All units can be connected sideways. Distance between shelves 330 mm (A4).

*Friends & Founders' wood collection ranges FSC-certified wood, made in Europe*



SMOKED

# UP TOWN



## UP TOWN

Designed by IDA L. HILDEBRAND

DIMENSIONS in cm	
SMALL	L 110 / D 21
LARGE	L 200 / D 32
LEAD TIME	4-6 WEEKS

up town SHELF / SOLID WOOD		Article no	SEK ex. VAT	SEK incl. VAT
<b>SMALL</b>				
NATURAL OAK	110 x 21	3101-05	6396	7995
SMOKED OAK	110 x 21	3101-06	6396	7995
<b>LARGE</b>				
NATURAL OAK	200 x 32	3111-05	11916	14895
SMOKED OAK	200 x 32	3111-06	11916	14895

### FINISHES

Shelf featured in solid wood. Oiltreated solvent-free satin finish. For wall mounting.

*Friends & Founders' wood collection ranges FSC-certified wood, made in Europe*



NATURAL



SMOKED

# CASTLE



## CASTLE

Designed by IDA L. HILDEBRAND

DIMENSIONS in cm

SMALL H 30 / DIA 60 / 11 kg  
 MEDIUM H 60 / DIA 60 / 14 kg  
 LARGE H 50 / DIA 120 / 30 kg

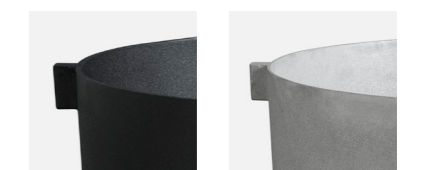
LEAD TIME STOCK (10-12 WEEKS)  
 USE INDOOR & OUTDOOR

### castle PLANTERS / INDOOR & OUTDOOR

			Article no	SEK ex. VAT	SEK incl. VAT
<b>SMALL</b>					
BLACK	DIA 60 / H 30		4030-01	10956	13695
RAW	DIA 60 / H 30		4030-02	9396	11745
<b>MEDIUM</b>					
BLACK	DIA 60 / H 60		4060-01	15668	19585
RAW	DIA 60 / H 60		4060-02	14124	17655
<b>LARGE</b>					
BLACK	DIA 120 / H 50		4050-01	33700	42125
RAW	DIA 120 / H 50		4050-02	31660	39575

### FINISHES

CASTLE PLANTER COLLECTION made of light weight recycled aluminium, uniquely sand casted by hand. Available in BLACK super durable UV resistance powder coating or in RAW blasted textured finish. Optional drainage - predefined for drilling.



BLACK

RAW

# MIRÓ MIRÓ



## MIRÓ MIRÓ

Designed by IDA L. HILDEBRAND

DIMENSIONS in cm	
OVAL VERTICAL	H 100 / W 50
OVAL HORIZONTAL	H 50 / W 100
ROUND SMALL	DIA 50
ROUND LARGE	DIA 80
LEAD TIME	STOCK

miró miró MIRRORS / BLACK TABLE		Article no	SEK ex. VAT	SEK incl. VAT	
<b>OVAL</b>					
GREY MIST	50 x 100		6052-01	3196	3995
BRONZE	50 x 100		6052-02	3196	3995
CLEAR	50 x 100		6052-03	3196	3995
<b>ROUND SMALL</b>					
CLEAR	DIA 50		6051-03	2636	3295
<b>ROUND LARGE</b>					
CLEAR	DIA 80		6053-03	3356	4195

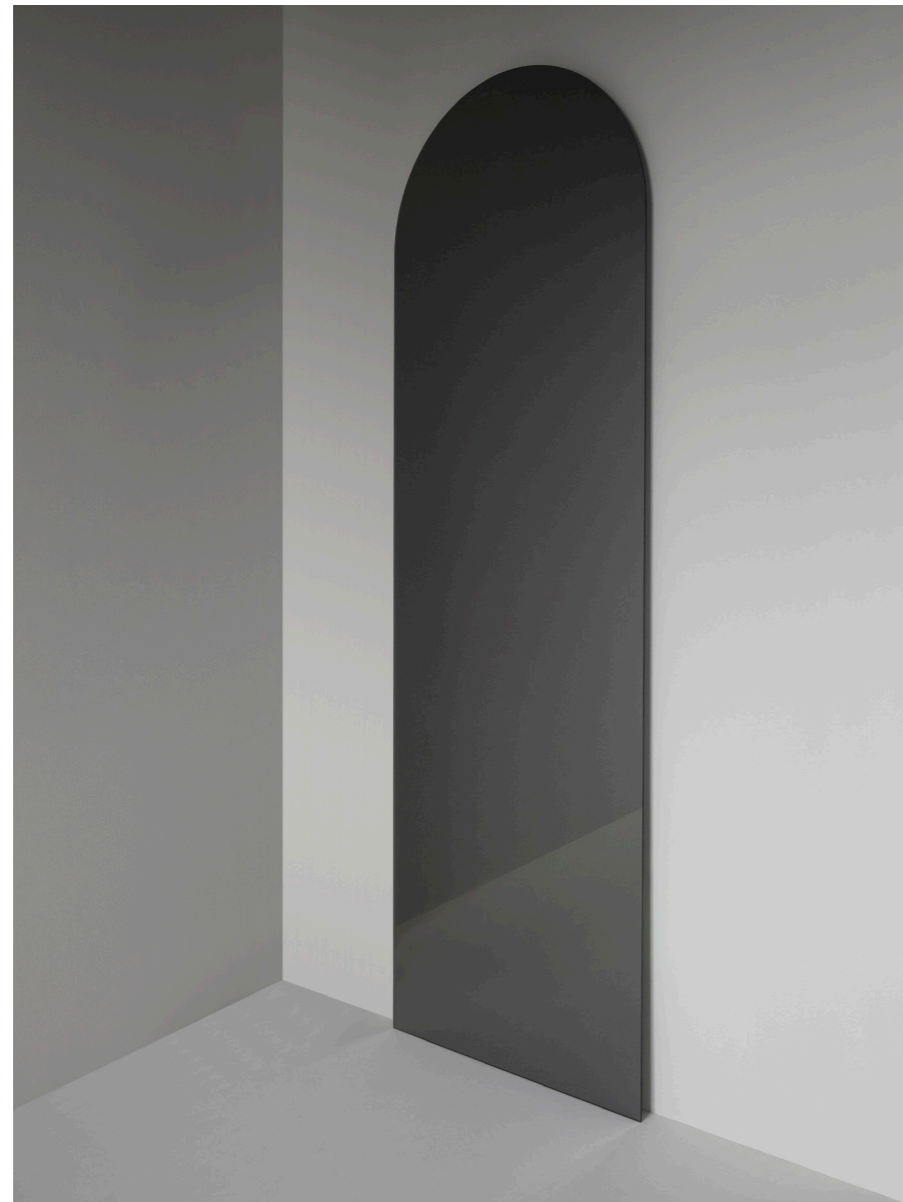
### FINISHES

MIRÓ MIRÓ COLLECTION ranges wall mirrors with a round table for small artefacts. Featured in shaded or clear mirror glass. Table in BLACK coated metal. Oval versions optional vertical or horizontal wall mounting.





# ARC



## ARC

Designed by IDA L. HILDEBRAND

DIMENSIONS in cm	
SMALL	H 200 / W 65 / 22.2 kg
LARGE	H 230 / W 80 / 27.4 kg
DEPTH	3.5
LEAD TIME	STOCK

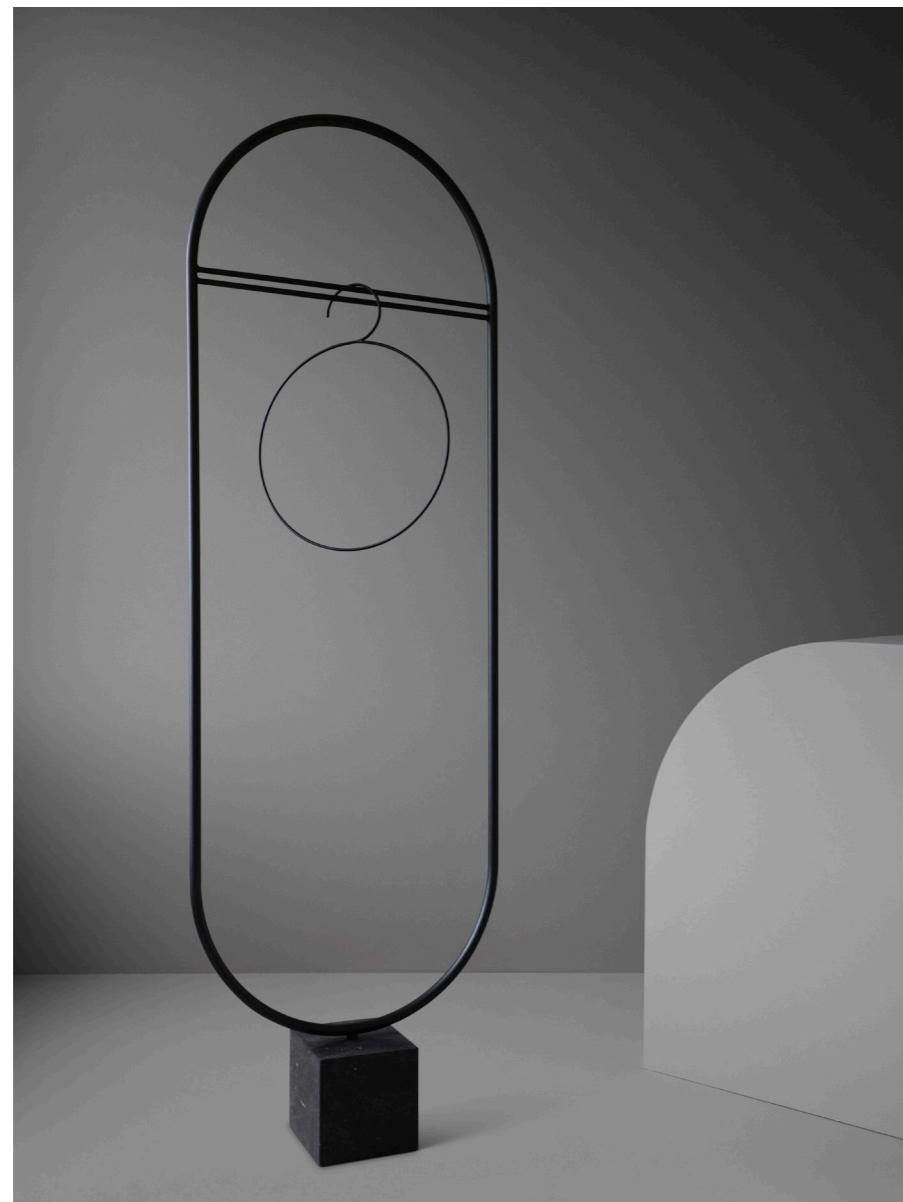
arc MIRRORS		Article no	SEK ex. VAT	SEK incl. VAT
<b>SMALL</b>				
GREY MIST	H 200 / W 65	6001-01	10396	12995
CLEAR	H 200 / W 65	6001-03	10396	12995
<b>LARGE</b>				
GREY MIST	H 230 / W 80	6002-01	11596	14495
CLEAR	H 230 / W 80	6002-03	11596	14495

### FINISHES

ARC COLLECTION featured in arc shaped shaded or clear mirror glass. Backside including consoles in powder coated metal. For wall mounting.



# STAND OUT



## STAND OUT

Designed by Friends & Founders

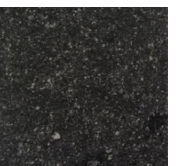
DIMENSIONS in cm  
H 200 / W 65 / D 20

WEIGHT 28 kg  
LEAD TIME STOCK

stand out COAT STAND	Article no	SEK ex. VAT	SEK incl. VAT
BLACK MARBLE	6090-01	10000	12500

### FINISHES

STAND OUT coat stand featured in solid European marble and BLACK powder coated steel.



BELGIUM BLUE

# PARIS NIGHTS

COLLECTION



## PARIS NIGHTS

Designed by IDA L. HILDEBRAND

DIMENSIONS in cm

PENDANT SMALL	H 34 / W 25 / 1.5 kg
PENDANT LARGE	H 40 / W 34 / 2 kg
DESK	H 48 / W 25 / 3.4 kg
FLOOR	H 125 / W 34 / 6.1 kg
SOURCE	LED G9 / MAX 5W 230V
	NOT INCLUDED
LEAD TIME	STOCK

### paris nights LED LIGHTING / INDOOR

	Article no	SEK ex. VAT	SEK incl. VAT
<b>PENDANT LAMP</b>			
SMALL BLACK / OPAL GLASS	5051-01	3804	4755
LARGE BLACK / OPAL GLASS	5052-01	4124	5155
<b>DESK LAMP</b>			
BLACK / OPAL GLASS / DIMMER	5061-01	5124	6405
<b>FLOOR LAMP</b>			
BLACK / OPAL GLASS / DIMMER	5071-01	5764	7205

### FINISHES

Lighting collection featured in mouth blown opal glass and NIGHT BLACK satin finish metal.  
All fixtures fitted with BLACK textile cords. For pendants a metal canopy is included for ceiling suspension.  
INDOOR USE ONLY

# LA LAMPE

COLLECTION






## LA LAMPE

Designed by IDA L. HILDEBRAND

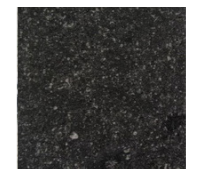
DIMENSIONS in cm	
PENDANT	H 11 / W 15 / 0.7 kg
WALL	H 60 / W 30 / 1.3 kg
FLOOR	H 130 / W 60 / 15.9 kg
SOURCE	LED E27 / MAX 20W 230V
	NOT INCLUDED
CORD	TEXTILE BLACK
LEAD TIME	STOCK

### la lampe LIGHTING / INDOOR

	Article no	SEK ex. VAT	SEK incl. VAT
<b>PENDANT LAMP</b>			
BLACK	 5011-01	2448	3060
<b>WALL LAMP</b>			
BLACK	 5031-01	2484	3105
<b>FLOOR LAMP</b>			
BLACK MARBLE	 5002-02	9580	11975
BEIGE TRAVERTINE	5002-04	8756	10945

### FINISHES

Lighting collection featured in NIGHT BLACK satin finish metal. Floor light is featured with a sphere geometric base in marble. All fixtures with BLACK textile cords. For pendants a metal canopy is included for ceiling suspension. INDOOR USE ONLY



BELGIUM BLUE



TRAVERTINE

# BOXER

COLLECTION



## BOXER

Designed by IDA L. HILDEBRAND

DIMENSIONS in cm

DESK	H 50 / W 14 / 4.9 kg
FLOOR	H 120 / W 21.5 / 16 kg
SOURCE	LED G9 / MAX 5W 230V NOT INCLUDED
CORD	TEXTILE BLACK
LEAD TIME	STOCK

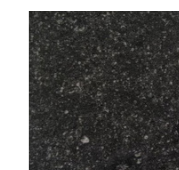
### boxer LED LIGHTING / INDOOR

	Article no	SEK ex. VAT	SEK incl. VAT
<b>DESK LAMP</b>			
BLACK MARBLE / OPAL GLASS / DIMMER	5081-02	7440	9300
BEIGE TRAVERTINE / OPAL GLASS / DIMMER	5081-04	7116	8895
<b>FLOOR LAMP</b>			
BLACK MARBLE / OPAL GLASS / DIMMER	5085-02	10336	12920
BEIGE TRAVERTINE / OPAL GLASS / DIMMER	5085-04	9516	11895



### FINISHES

Lighting collection featured with a marble base and shade in mouth blown opal glass. Metal parts available in NIGHT BLACK satin finish metal. All fixtures fitted with BLACK textile cords.  
INDOOR USE ONLY



BELGIUM BLUE



TRAVERTINE